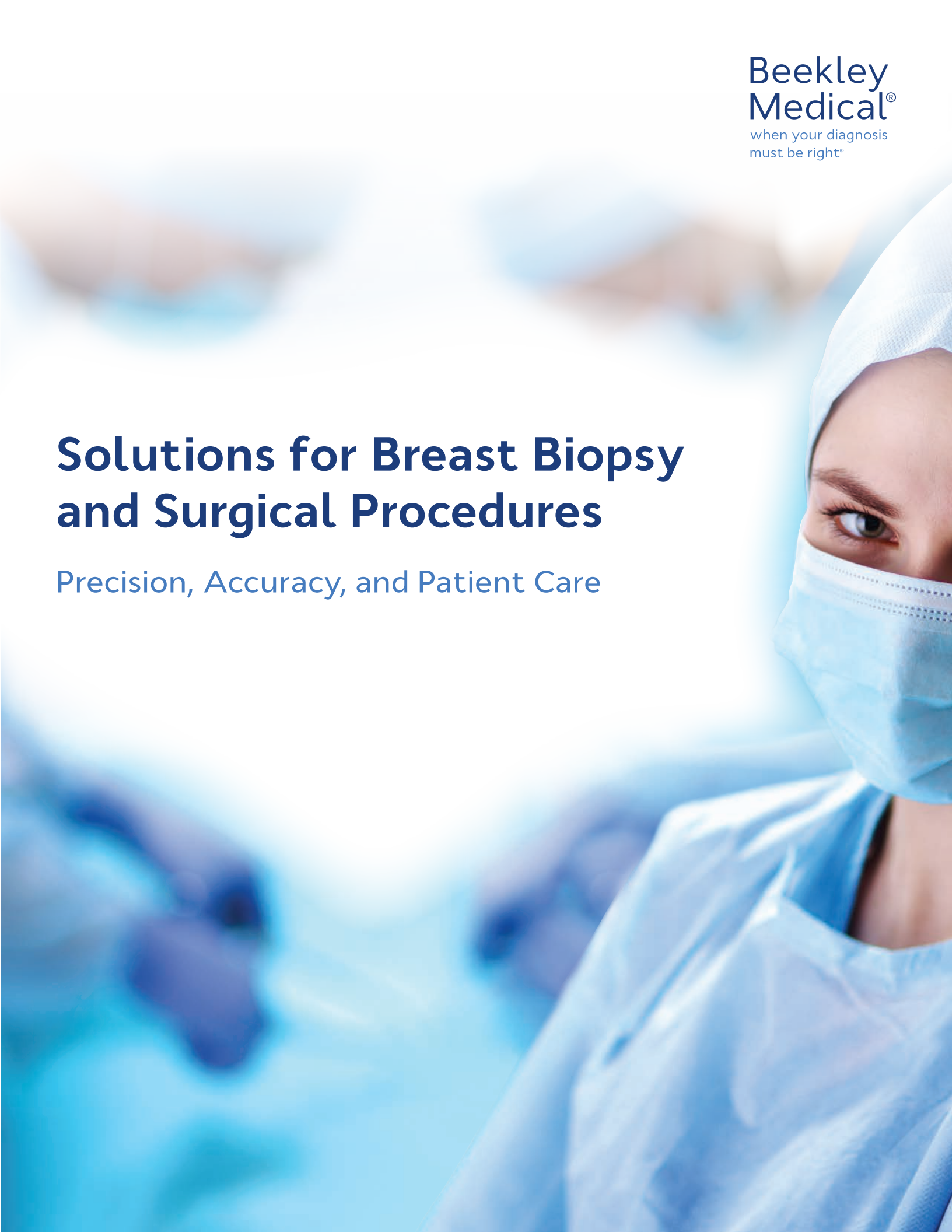


Solutions for Breast Biopsy and Surgical Procedures

Precision, Accuracy, and Patient Care



Breast Biopsy

ColdSPOT® Cold Therapy Packs

Reduce bleeding, bruising, pain, and inflammation after minimally invasive breast biopsies.

ColdSPOT cold therapy packs are discreet, self-adhesive cold therapy packs that provide targeted and effective cold treatment for up to 3 times longer than ice or chemical packs. A patient-friendly low profile design and two self-adhesive side tabs allow ColdSPOT cold therapy packs to be worn discreetly and comfortably without shifting, ensuring targeted therapy to the afflicted area.



ColdSPOT®

REF 500 **QTY** 100/case

- 2.75" x 3" gel pack



ColdSPOT® with Floral Design

REF 502 **QTY** 68/case

- 2" x 3" advanced gel pack



ColdSPOT® Pillows

REF 505 **QTY** 50/box

- 2" x 3" advanced gel pack with soft, flexible covering



CoreTainer® Stereotactic Core Biopsy Image and Transport System

Separate, image, and transport fragile stereotactic core needle biopsy specimens with minimal handling.

CoreTainer stereotactic core biopsy image and transport system is an all-in-one system for separating, imaging, and transporting stereotactic core needle biopsy specimens that helps protect tissue integrity by minimizing handling. Watertight lid and formalin compatibility allow for safe transport to pathology. Imaging directly in CoreTainer offers the ability to visualize microcalcifications and helps save time for radiology and pathology to correlate core location to the radiographic image. Write-on label ensures cores and patient information stay together.



CoreTainer® with A/B Divider for Basket Collection

REF 303 QTY 12/box

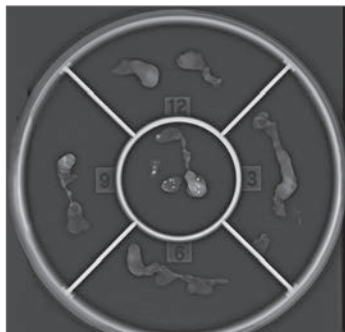
- 2 separate compartments



CoreTainer® with Clock-Face Divider for Manual Core Collection

REF 301 QTY 12/box

- 5 separate compartments; one center and four surrounding o'clock sections



Needle Localization

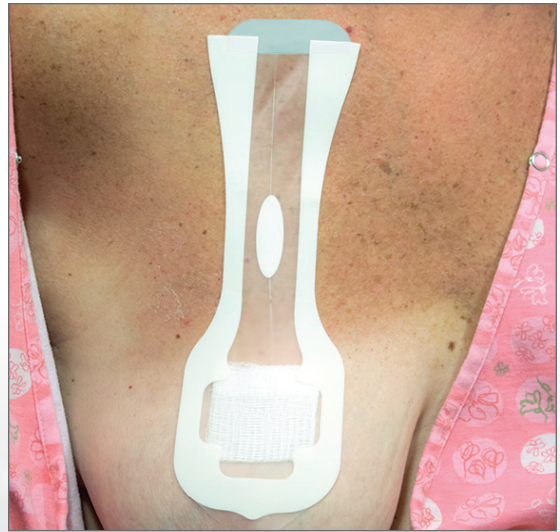
Cradles® Needle Localization Wire Protectors

Help prevent wire migration or movement during transport to surgery
for more accurate excision of targeted breast tissue.

Cradles are professional clear covers that protect and stabilize the needle localization wire. Unlike bulky padding, Cradles needle localization wire protectors conform to the patient's body for greater patient comfort and to minimize the chance for wire movement during transport. The localization wire is visible at all times, making removal of Cradles in preparation for surgery safe and easy, with no guesswork or potential for tugging of the wire.

Cradles®

REF 309 **QTY 12/box**



Pinnacle® Needle-Loc Needle Protectors

Protect and stabilize the needle localization needle/canula.

When a physician requires the needle or cannula to remain in place after a localization procedure, Pinnacle needle-loc needle protectors offers a professional alternative to coffee cups and tape.

Sturdy construction and “just right” adhesive tabs help guard needle against accidental bumps and dislodgement. Peek-through window allows visibility of needle; intuitive design makes Pinnacle easy to apply and remove.

Pinnacle®

REF 330 QTY 12/box

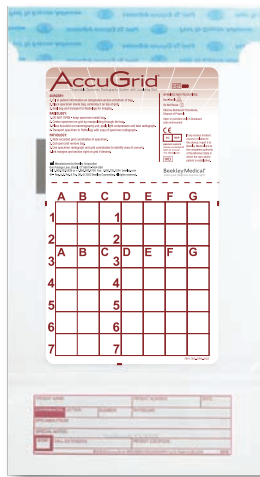


Surgical Lumpectomy

AccuGrid® Specimen Localizing Grid System

Safely image, transport, and process surgical breast specimens without losing specimen orientation or risking exposure to bloodborne pathogens.

AccuGrid specimen localizing grid system is a sealed localizing grid system for imaging, transporting, and processing surgical breast specimens. A special coating on the grid prevents specimen movement during transport to pathology. Two sets of radiolucent alphanumeric coordinates provide accurate localization without obscuring tissue detail.



AccuGrid®

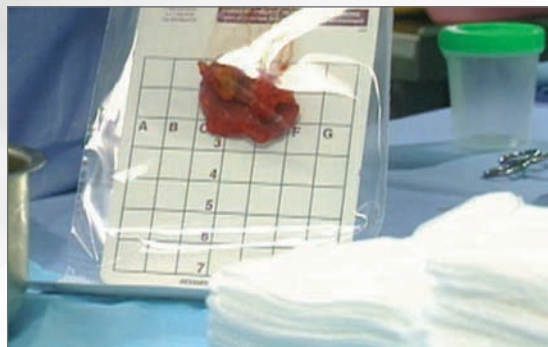
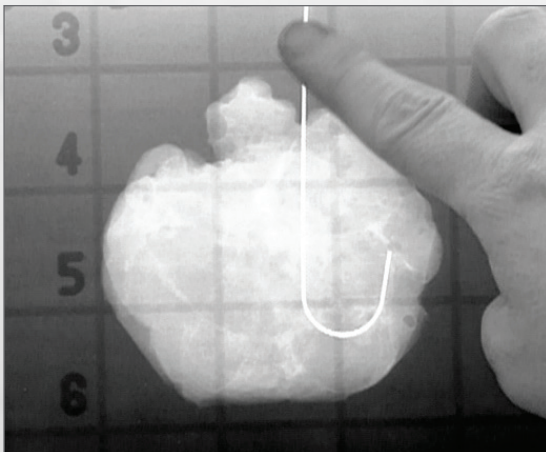
REF 300 **QTY 12/box**

- 4.65" radiolucent grid inside a sealable surgical bag

AccuGrid®

REF 302 **QTY 10/box**

- 5.65" radiolucent grid inside a sealable surgical bag
- Expanded grid size for use with larger specimens



MarginMap® Specimen Orientation Charms

Clearly identify specimen margins for orientation at a glance.

MarginMap's six distinctly shaped charms clearly identify the margin orientation of surgical specimens.

The charms are easily sutured to their corresponding margin to identify orientation, helping to eliminate delays and questions that may occur between the surgeon, operating room nurse, radiologist, and pathologist.



MarginMap®

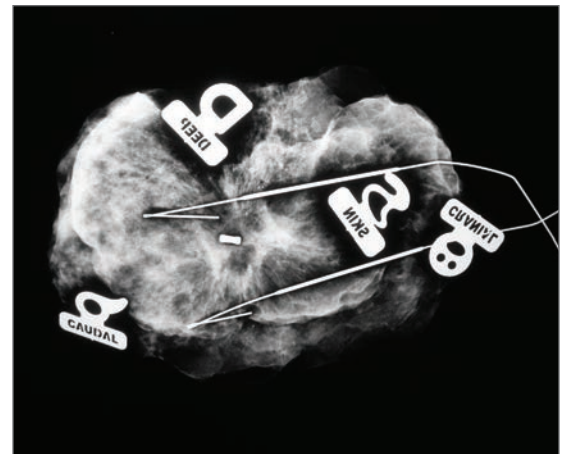
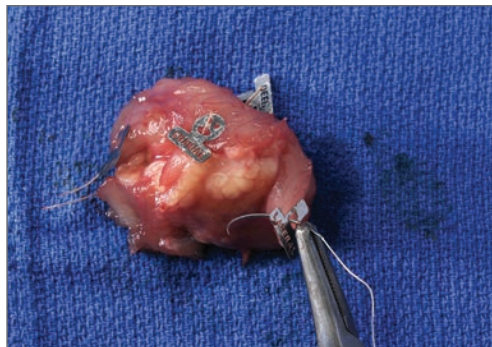
REF 304 QTY 15/box

- Six distinctly shaped sterile 5mm charms per unit

MarginMap®

REF 308 QTY 15/box

- Six distinctly shaped sterile 10mm charms per unit



You might also be interested in...



Bella Blankets® protective coverlets for mammography to help with breast stabilization and blood absorption during interventional procedures.



Elequil Aromatabs® aromatherapy for the clinical setting to help reduce anxiousness and soothe queasiness for a better patient experience.

For more information or to order:

Call **1.800.233.5539** • Email **info@beekley.com** • Visit **beekley.com** • Fax: **1.800.735.1234**

Customers outside the U.S. contact your local distributor for pricing and product availability.

To locate a distributor call +1.860.583.4700 or email: international@beekley.com



Manufactured by Beekley Corporation
One Prestige Lane, Bristol, CT 06010-7454 USA
Tel: 1.800.233.5539 or +1.860.583.4700 Fax: 1.800.735.1234 beekley.com
Made in the USA Visit beekley.com for Product Safety Information

BEEKLEY, BEEKLEY MEDICAL, ACCUGRID, AROMATABS, BELLA BLANKETS, COLDSPOT, CORETAINER, CRADLES, ELEQUIL, ELEQUIL AROMATABS, MARGINMAP, PINNACLE, SPOT, and WHEN YOUR DIAGNOSIS MUST BE RIGHT are Reg. U.S. Pat. & Tm. Off. ACCUGRID, AROMATABS, BEEKLEY, CORETAINER, and SPOT are Registered Community Trademarks. BEEKLEY and AROMATABS are registered trademarks in Canada.

© 2023 Beekley Corporation. All rights reserved.



EC	REP
----	-----

EMERGO EUROPE
Westervoortsedijk 60
6827 AT Arnhem
The Netherlands



REV: BB_BR_0923